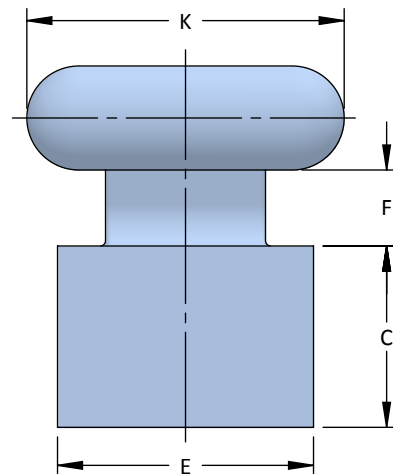
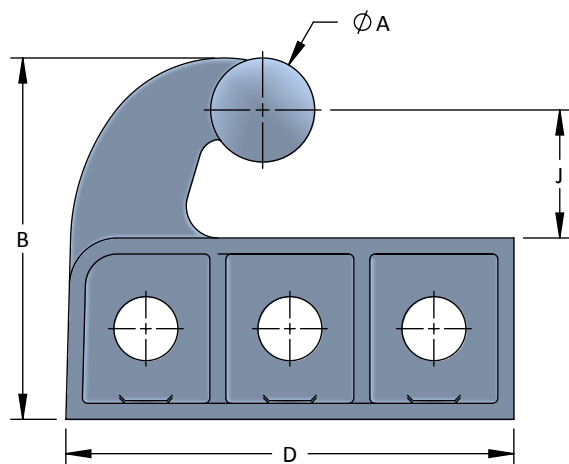
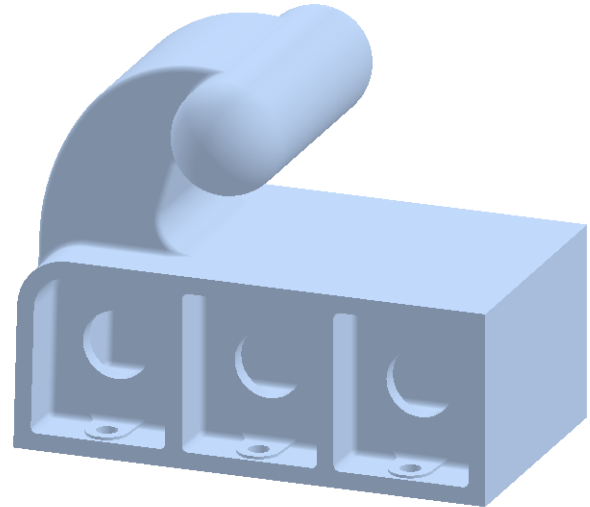
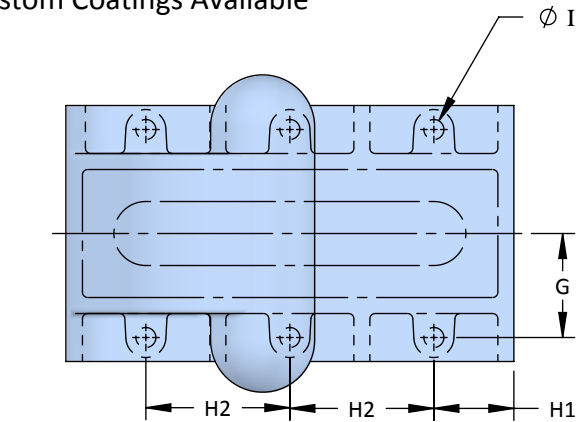


# Bollards

## T-Head Mooring Bollard

- Anchor Bolts and Hardware Available
- Custom Materials Available
- Custom Coatings Available



Model No.	Safe Working Load (Tons)	A	B	C	D	E	F	G	H1	H2	I	J	K	No. of Bolts
S1127	150	9-3/4	33-7/8	17	42	24	7-1/8	9-3/4	7-1/2	13-1/2	1-7/8	12	29-3/4	6

All dimensions are in inches and are subject to change.

