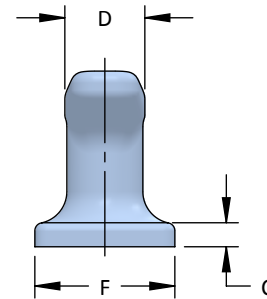
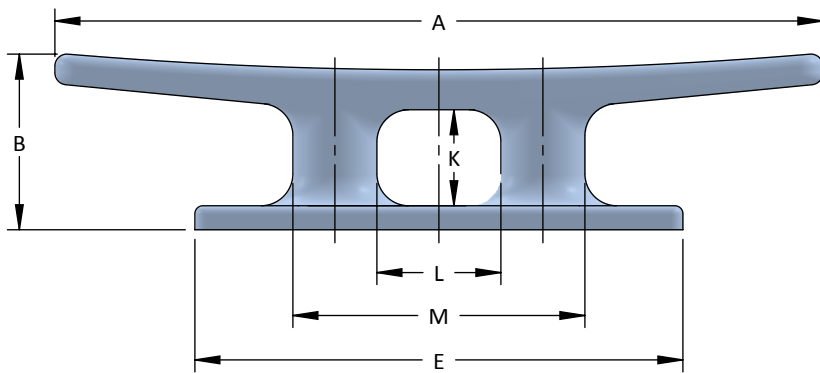
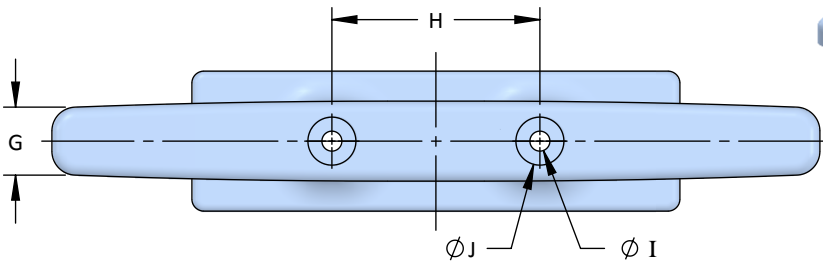
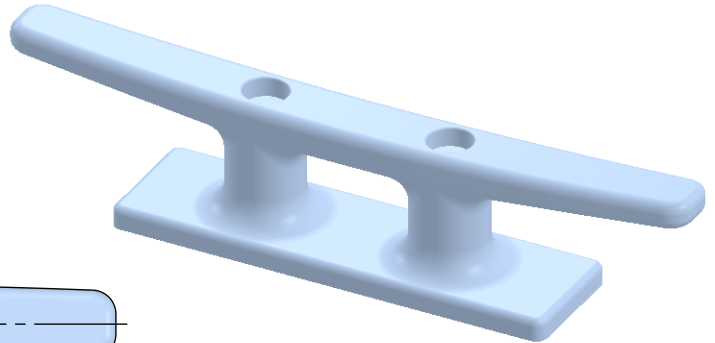


Dock Cleats

Saddle Back Cleats

- Anchor Bolts and Hardware Available
- Custom Coatings Available
- Custom Materials Available



Model No.	A	B	C	D	E	F	G	H	I	J	K	L	M	No. of Bolts
S1224-8	8	2	3/8	1	5-1/8	1-1/2	13/16	2-1/2	5/16	1	7/8	1-1/2	3-1/2	2
S1224-10	10	2-3/8	3/8	1-1/4	6-3/8	1-11/16	7/8	3	3/8	1	1-1/4	1-5/8	4-3/8	2
S1224-12	12	2-7/8	1/2	1-1/4	7-5/8	2	1-1/8	3-1/2	3/8	1	1-1/4	1-3/4	5-1/4	2
S1224-15	15	3-1/2	9/16	1-9/16	9-1/2	2-1/2	1-3/8	4-3/8	1/2	1-1/8	2-1/8	2-1/4	6-1/2	2
S1224-18	18	4-1/4	5/8	1-7/8	11-1/2	3	1-5/8	5	1/2	1-1/8	2-1/8	2-9/16	7-7/16	2
S1224-20	20	4-5/8	5/8	2-1/8	12-3/4	3-3/8	1-7/8	5-1/2	5/8	1-3/8	2-1/8	2-5/8	8-3/8	2
S1224-24	24	5-1/2	3/4	2-1/2	15-1/4	4-3/8	2-1/8	6-1/2	5/8	1-1/2	3	3-7/8	9-1/8	2
S1224-26	26	6	7/8	2-3/4	16-1/2	4-3/4	2-3/8	7	3/4	1-5/8	3-3/8	4-1/4	9-3/4	2
S1224-30	30	7	1	3	19	5-1/2	2-1/2	8	1	2-1/4	4	5	11	2
S1224-36	36	7-1/2	1-1/8	3-1/2	22	6-3/8	3	8-5/8	1-1/8	2-1/2	4	5-3/8	11-7/8	2
S1224-42	42	9	1-1/4	4	25-1/2	7-3/8	3-3/8	10	1-1/4	2-3/4	5-1/4	6-1/4	13-3/4	2
S1224-48	48	11	1-1/2	4-1/2	29-1/4	8-1/2	3-3/4	11-1/2	1-3/8	3	6	7-1/4	15-3/4	2
S1224-50	50	12	1-1/2	4-3/4	30-1/2	9	4	12	1-5/8	3-1/4	6-3/8	7-5/8	16-3/8	2
S1224-60	60	14	1-3/4	5-5/8	36-1/2	10-3/4	4-3/4	14-3/8	1-7/8	3-5/8	7-1/2	9	19-3/4	2

All dimensions are in inches and are subject to change.

