



MADE IN U.S.A



PERRY JOHNSON  
REGISTRARS, INC.

ISO 9001:2008

# Deck Machinery



Since 1887

## Schoellhorn-Albrecht

Machine Co., Inc.



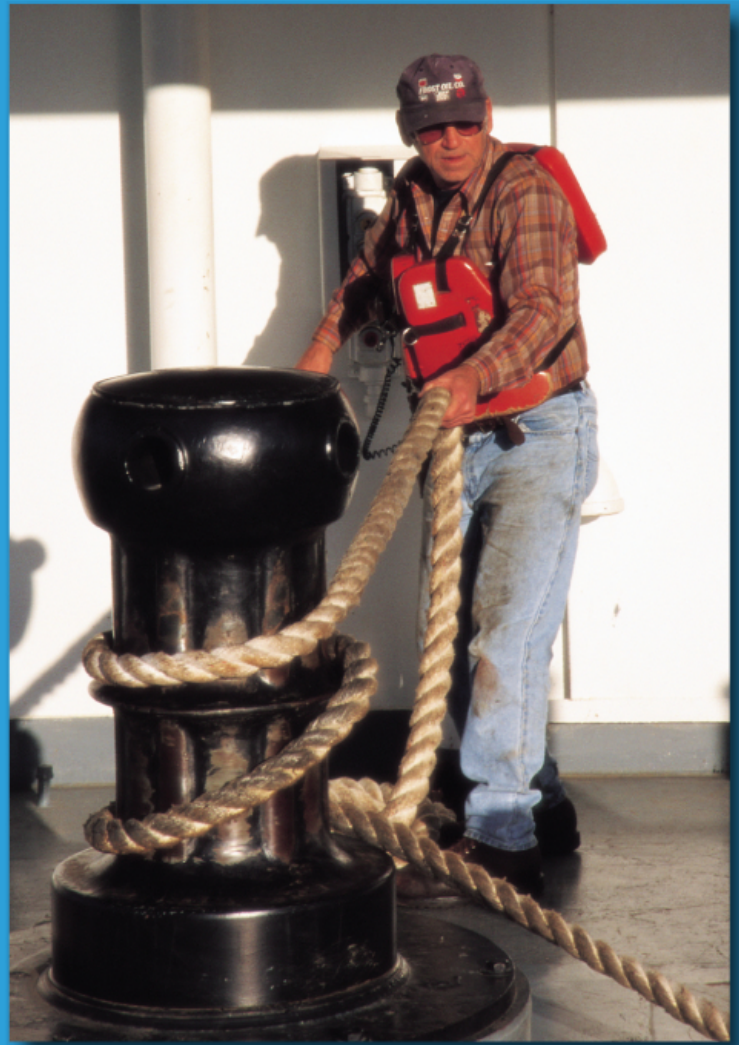
Mooring Fittings • Capstans • Anchor Windlasses • Anchors • Accommodation Ladders & Gangways • Special Projects

# About Us

Since 1887 Schoellhorn-Albrecht has been an industry leader in the design and manufacture of Mooring Equipment and Systems including: Capstans, Anchor Windlasses, Vessel Access Systems, and Deck and Dock Fittings. Our products have provided years of reliable service to operators throughout the world.

Our specialty is Custom Engineered equipment designed specifically for your application. Whether you need to upgrade existing equipment or build new, we can provide the solution at a competitive price. Products are designed and manufactured to industry standards such as ABS, ISO, JIS, OCIMF, NAVSEA, and Naval Vessel Regulations.

Schoellhorn-Albrecht Capstans and Winches are designed to operate in a Marine Environment and will take punishment with a minimum of maintenance. Used by the Panama Canal Commission, St. Lawrence Seaway, the U.S. Navy, and Commercial Shipyards, thousands of these units are in service throughout the world.



# History

Schoellhorn-Albrecht has enjoyed a long history in St. Louis supporting the inland river industry. Pictured at right is the Schoellhorn-Albrecht building in 1887. It was located on the St. Louis Riverfront in historic Laclede's Landing on the west bank of the Mississippi River.

# Capstans

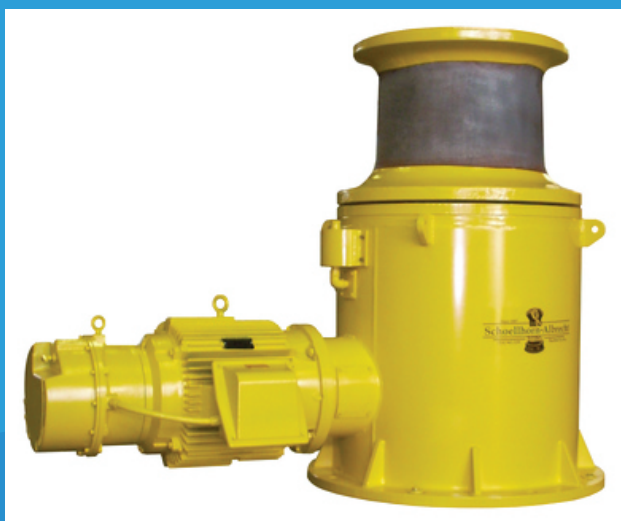


## Capstan/Carpuller

- Over 25 Years of Service
- Hundreds of Units in Service Worldwide
- Tremndous Power in a Small Package
- Electric, Hydraulic & Pneumatic Ratings
- Running Pull Ratings up to 13,000 LBS
- Horse Power Range: 3HP – 15HP
- Barrel Diameters 8", 10", 12"

## Thru-the-Deck/23000

- Over 50 Years of Service
- Hundreds of Units in Service
- Electric, Hydraulic & Pneumatic Ratings
- Up to 25HP Rating
- Variety of Line Pulls
- Static (Bollard) Pull: 100,000 LBS
- USCG& USACE Approved

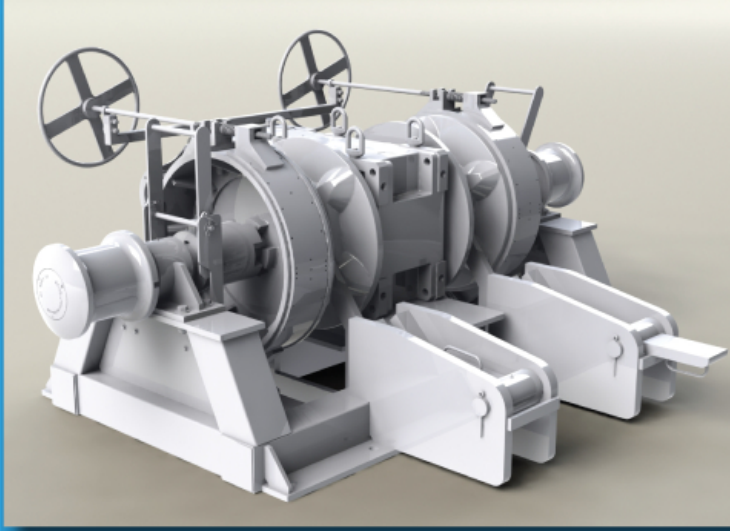


## Deck Mounted

- Over 25 Years of Service
- Hundreds of Units in Service
- Electric, Hydraulic & Pneumatic Ratings
- Up to 75HP Rating
- Variety of Line Pulls & Speeds
- Several Barrel Sizes & Styles Available
- Used by: USN, USCG, USACE

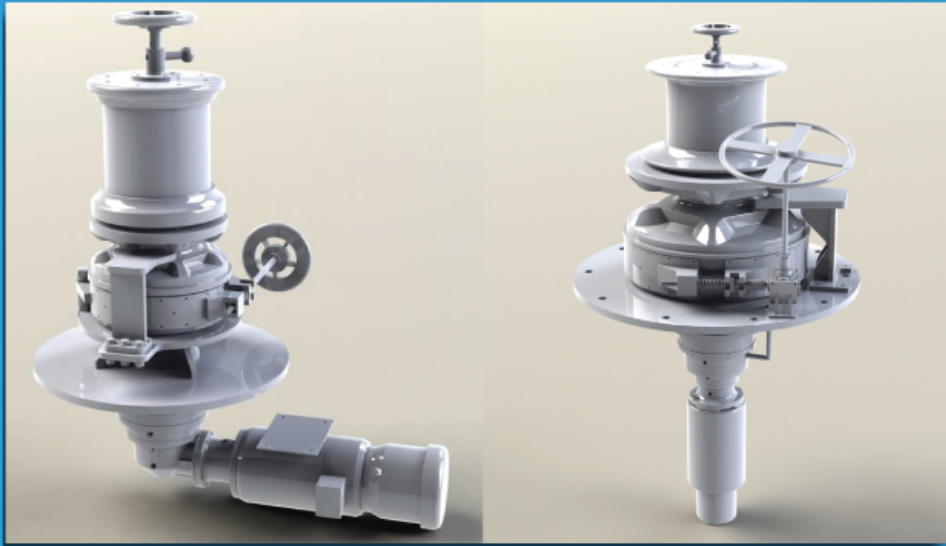


# Anchor Windlasses



## Horizontal

- Electric or Hydraulic
- Single or Double Wildcat
- Several Chain Sizes Available
- Variety of HP & Speeds
- Custom Control Packages



## Vertical – Thru Deck

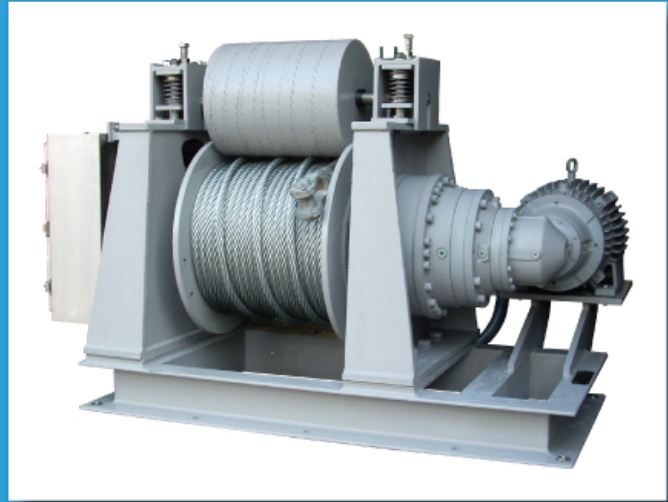
- Electric or Hydraulic
- Several Chain Sizes Available
- Variety of HP & Speeds
- Custom Control Packages

**ABS Certification Available**

# Winches

## Mooring Winch

- Electric or Hydraulic
- Several Designs Available
- Custom Control Packages



## Tugger Winch

- Electric or Hydraulic
- Compact Design
- Several Designs Available
- Custom Control Packages

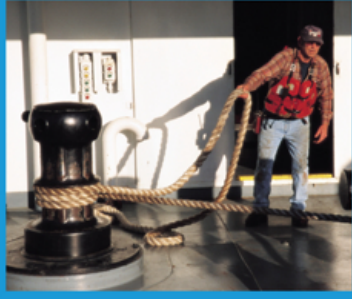
## Davit Winch

- Compact Design
- Several Options
- Custom Control Packages



# Deck Machinery

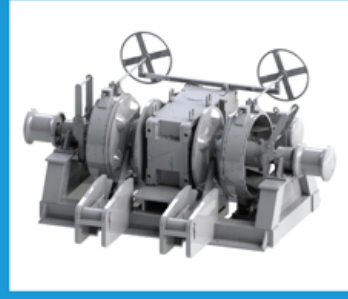
Thru-Deck Capstan



Carpuller



Anchor Windlass



Above-Deck Capstan



# Mooring Fittings

Chock



Roller Fairlead



Double Bitt



Four Roller Fairlead



# Accommodation Ladders & Gangways

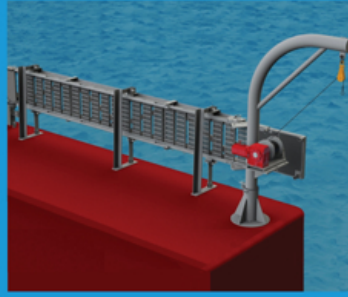
Deployed Ladder



Truss Style Gangway



Stowed Ladder



Beam Style Gangway



# Special Projects

Rudder Horn



Shaft Strut



Bow Staple



Anchor



Schoellhorn-Albrecht Machine Co., Inc.  
1141 Reco Ave., St. Louis, MO 63126  
Telephone: 314-965-3339  
Fax: 314-965-3341

[www.schoellhorn-albrecht.com](http://www.schoellhorn-albrecht.com)